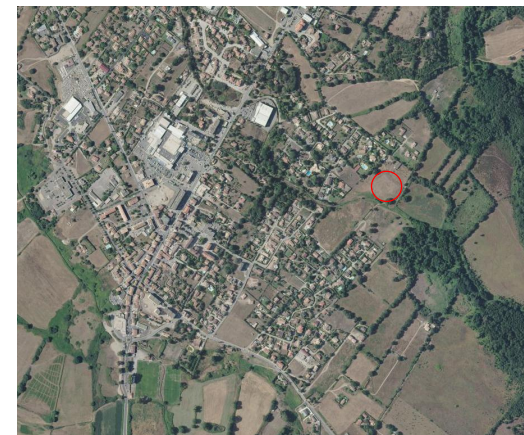
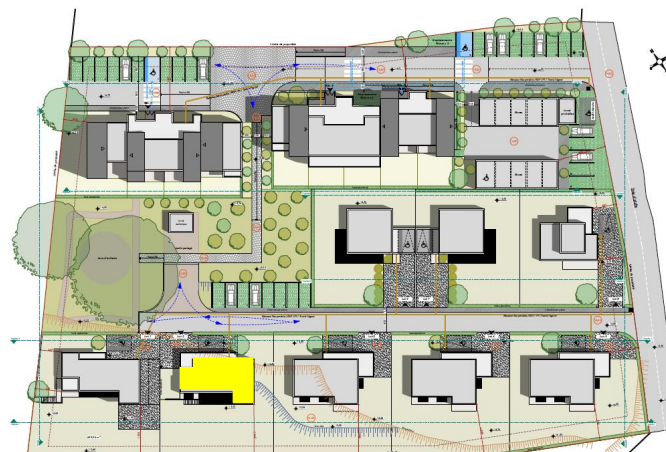




U Querinu



Plan de situation

Lot 2= 633 m²

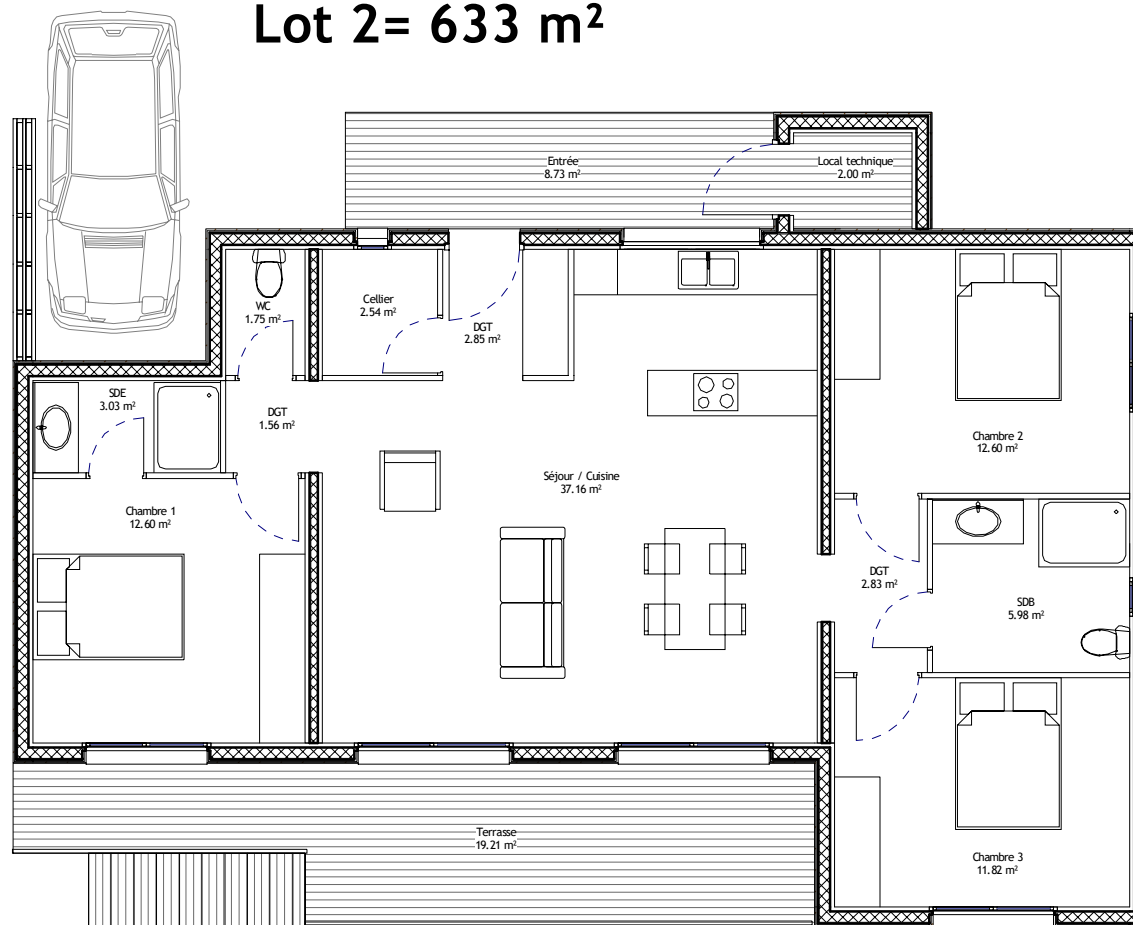
Nom	Surface
-----	---------

Séjour / Cuisine	37.16 m ²
Chambre 1	12.60 m ²
Chambre 2	12.60 m ²
Chambre 3	11.82 m ²
SDB	5.98 m ²
SDE	3.03 m ²
DGT	2.85 m ²
DGT	2.83 m ²
Cellier	2.54 m ²
Local technique	2.00 m ²
WC	1.75 m ²
DGT	1.56 m ²

96.70 m²

Terrasse	19.21 m ²
Entrée	8.73 m ²

27.94 m²



Villa - Lot 2