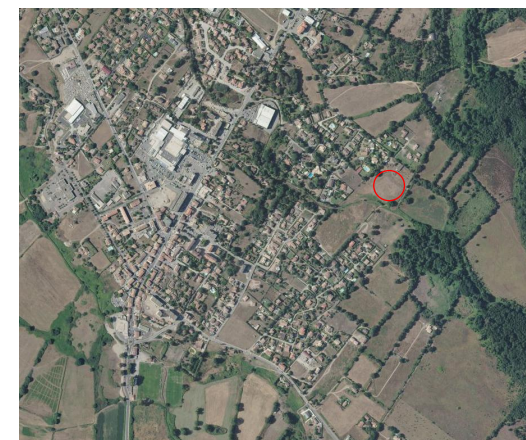


U Querinu



Plan de situation

Lot 8 = 511 m²

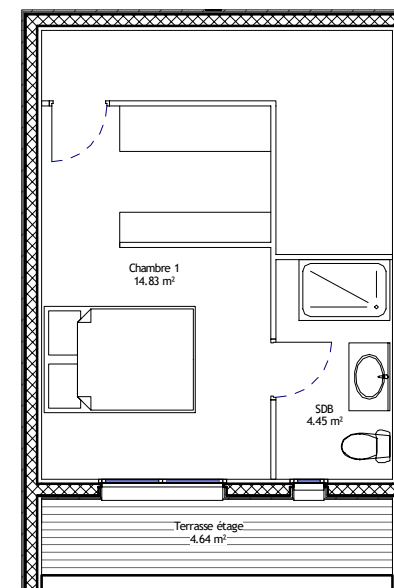
Nom	Surface
-----	---------

Séjour / Cuisine	33.10 m ²
Chambre 1	14.83 m ²
Chambre 2	13.24 m ²
SDE	4.94 m ²
SDB	4.45 m ²
WC	2.31 m ²
DGT	2.30 m ²
	75.17 m ²

Terrasse	18.14 m ²
Entrée	5.49 m ²
Terrasse étage	4.64 m ²
	28.26 m ²



RDC



R+1